

2022 KWMS
The 17th International
Conference

KWMS 한국여성수학학회
KIMS

Korean Women in Mathematical Sciences (KWMS)

Soon-Yi Kang (Kangwon National University)

Women in Mathematics , RIMS

September 7-9, 2022



2022 KWMS The 17th International Conference

June 23. Thu. - 24. Fri. 2022
KIAS 1503

www.kwms.or.kr



Objectives of Establishment

Korean Women in Mathematical Sciences was founded to contribute to the development and dissemination of mathematical sciences by fostering the academic growth and active exchange of Korean mathematicians and by expanding the base of female mathematicians.

KWMS

Support	Promote	Protect	Collect	Enhance
equal opportunities for female mathematicians	Women's participation in research activities and collaboration	the rights of female mathematicians and promote their well-being	math-related data and publish reports	public understanding of mathematics



1st International Workshop for Korean Women in Mathematics

June 21-23, 2004
KIAS International Conference Hall, Seoul, Korea

Invited Speakers

Marie Choda	Osaka Kyoiku University, JAPAN
Young-Eun Choi	University of Warwick, UK
Jane M. Hawkins	University of North Carolina at Chapel Hill, USA
Eunok Jung	KonKuk University, KOREA
Sung Ha Kang	University of Kentucky, USA
Yoonjin Lee	Smith College, USA
Lynne H. Walling	University of Colorado, USA
Ae Ja Yee	Pennsylvania State University, USA

Organizing Committee

Soojin Cho	Ajou University
YoungJu Choie	Pohang University of Science and Technology (POSTECH)
Sun Young Jang	Ulsan University
Soon-Yi Kang	Korea Institute for Advanced Study (KIAS)
Wansoon Kim	Hoseo University
Kyewon Koh Park	Ajou University
Heisook Lee	Ewha Womans University
Insuk Wee (Chair)	Korea University

Organized by
Korea Institute for Advanced Study (www.kias.re.kr)
Korean Women in Mathematical Sciences (www.kwms.or.kr)

For more information, please visit the workshop homepage (http://www.kwms.or.kr/www/popup/contents_0002.html).

KWMS Activities



International Conference

- To form a global network of female mathematicians and to visualize the mathematical competence of them



Next Generation Career Leaders Forum

- To foster next generation of female mathematicians and to train them in leadership



Student Reporters

- To offer female students with early exposure to mathematics community activities



Travel Grant

- To provide opportunities for female mathematicians to lay the foundation for establishing academic exchange networks

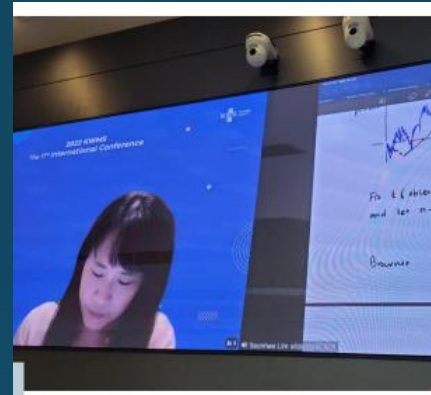
KWMS International Conference

Plenary Lectures



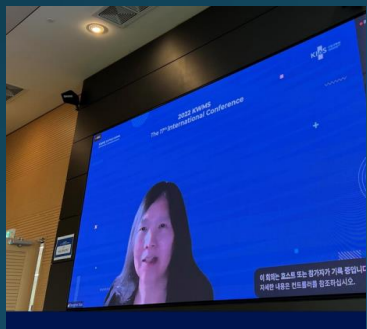
Sanoli Gun
(Institute of Mathematical Sciences)

The mysterious Ramanujan tau function



Seonhee Lim
(Seoul National University/ UCSD)

Local limit theorem in negative curvature



Dongmei Xiao
(Shanghai Jiao Tong University)

Limit cycles bifurcating from a period annulus of planar Hamiltonian systems



Sylvie Corteel
(UC Berkeley/CNRS)

Cylindric partitions and Rogers Ramanujan identities

Public Lectures

- To ensure the continued advancement of female mathematicians

Trilemma of Blockchain : how to scale up securely as a distributed ledger?

by Jiyeon Kim (NEWZ Chief Operating Officer)

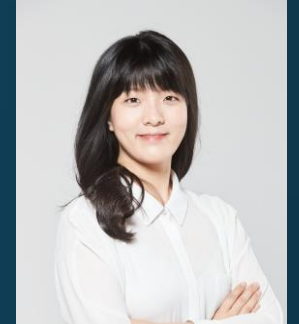
Since 2017, blockchain has become popular because of cryptocurrencies including Bitcoin, the most valuable crypto asset in the world.

Also, some concepts related to blockchain such as NFT, DeFi got a spotlight. However there is still a trilemma of blockchain unsolved from the beginning.

How can we speed up the distributed ledger in a more secure manner?

Is it inevitable to become a centralized network in order to scale up?

Let's talk about some efforts in these days to solve this problem.



Role of scientists in an era of fake news and democratic crises

by Yoo-Hyang Kim (National Assembly Research Service)



Digital technology has achieved diversification of participation and democratization of information. At the same time, it can actually put democracy at risk.

The post-truth era emerged in the historical and political background of political polarization and the re-emergence of populism. The era filled the ideological gap that emerged as the world transitioned from the 20th century into the 21st century after the end of the Cold War.

The post-truth era demands distrust of public institutions and media, and even demands a political statement on science and technology. This presentation raises questions about the role of Scientists in an era of technological advances, fake news, and democratic crises.

Panel Discussion

- Science policy for sustainable growth of scientists : female mathematicians' perspective

Experiences of and necessary support policies for female mathematicians of each generation in the process of entering, advancing, growing, and re-entering the career



Solidarity and Support

Government-led action

- Law to support and cultivate female human resources in science and technology (2002)
- Revision of the Education Public Officials Act (2020) : efforts should be made to ensure that the proportion of the specific gender among professors at national universities does not exceed three-quarters.

Support from friends

- Korea Institute for Advanced Study (KIAS)
- Korean Mathematical Society (KMS)
- Non-female mathematicians and scientists

Solidarity

- Korea Federation of Women's Science and Technology Associations (KOFWST)
- Association of Women Professors at National and Public Universities
- SNU Diversity Council
- AOWM, AWM, EWM,....

Courage